

Ritz-Carlton Hotel Irvine

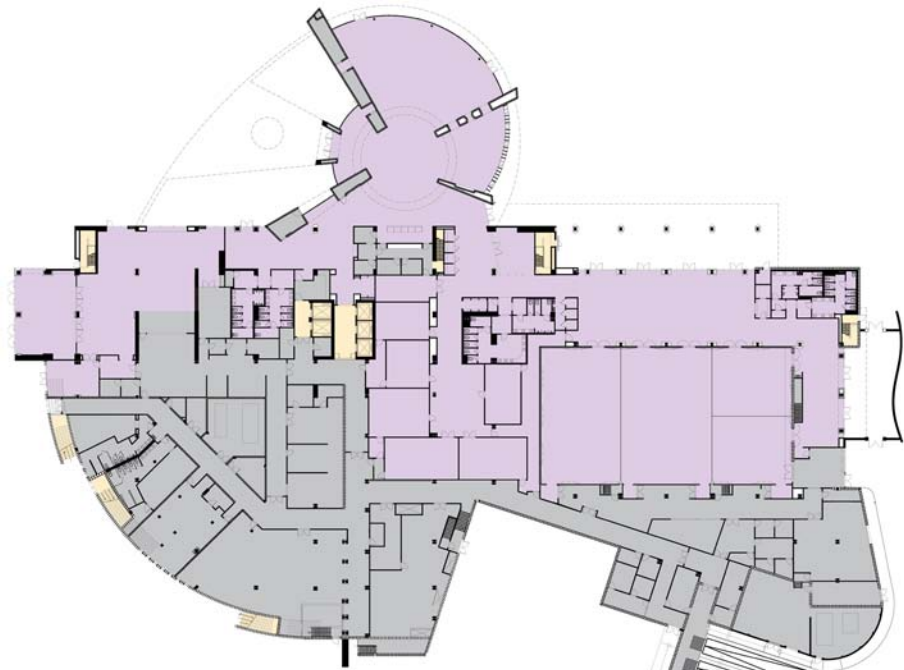
Irvine, California



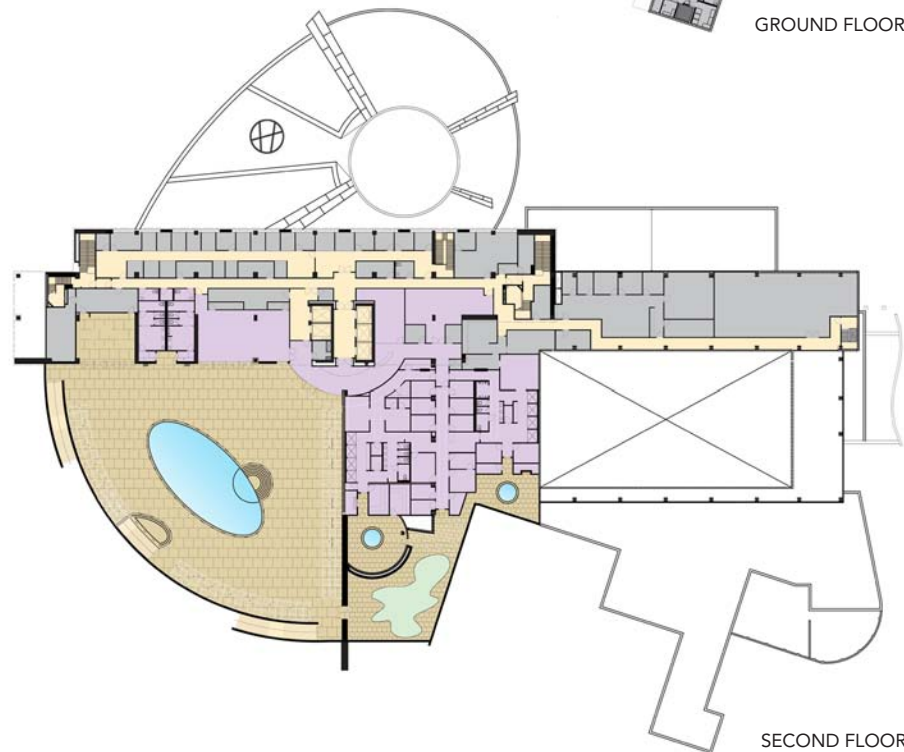
Located in a master-planned suburban office park, this 16-story, five-star luxury hotel contains 308 rooms, grand ballroom and meeting rooms, lobby bar, main restaurant, grill restaurant, fitness center and spa.

The design is comprised of a 15-story guest room tower positioned over a high one-story podium containing the lobby, ballrooms, meeting rooms and back-of-house functions. The curvilinear form of the lobby and back-of-house volumes is derived from an internal circulation road in the master plan that wraps around and the hotel site. The roof of the back-of-house podium is lushly landscaped and contains the spa, swimming pool and gardens. The porte cochere drop-off is carved into the lobby volume and bridged by a wide signage band and skylights. The guestroom tower is formed as two narrow slabs that slip past each, creating more corners for the larger guest suites. The slabs are "pinned" together by a cylindrical glass vertical volume that contains the elevators. The roof tops of each slab slopes at opposite angles from each other, creating a dramatic and iconic skyline from a distance. The pre-cast concrete facades are articulated by a large-scale grid pattern that groups three floor levels together vertical and two guest room bays horizontally. Designed under the direction of Christopher Coe while Managing Director and Director of Design of Arquitectonica Los Angeles.

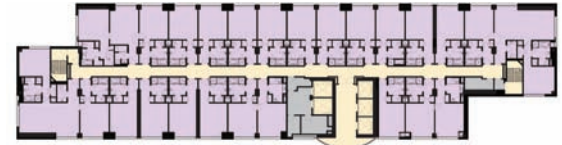




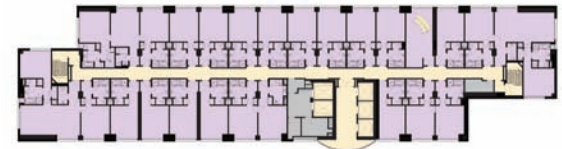
GROUND FLOOR PLAN



SECOND FLOOR PLAN



TYPICAL TOWER FLOOR PLAN



THIRD FLOOR PLAN



FOURTH FLOOR PLAN



FIFTH FLOOR PLAN